



Hard Chess Puzzle # 0098

By

G Bud Games
<https://gbud.in>

January 7, 2022

Contents

Hard Chess puzzle # 0098 - Mate in 3 moves	3
Hard chess puzzle 0098	3
Solution to hard chess puzzle 0098	4
Solution 1	4
Right moves for the solution to the hard chess puzzle 0098	7
Explanation for the moves	7
Categories of hard chess puzzle 0098	8
hard chess puzzle 0098 chart	8
How to view the solution to hard chess puzzle 0098	10
How to get help for moves in the hard chess puzzle 0098	11
Play chess for free	12

List of Figures

1	Solve this hard chess puzzle 0098. Mate in 3 moves @ https://gbud.in/gf6cpp3	3
2	Solve this hard chess puzzle online with solution @ https://gbud.in/gf6cpp3	3
3	Initial board position of hard chess puzzle 0098	4
4	Nc6+	5
5	Ke8	5
6	Nf6+	6
7	Kf8	6
8	Re8#	7
9	hard chess puzzle 98 chart 1	8
10	hard chess puzzle 98 chart 2	9
11	hard chess puzzle 98 chart 3	9
12	hard chess puzzle 98 chart 4	10
13	Click the solution button to view solutions @ https://gbud.in/gf6cpp3	10
14	Click the help button to get help on next move @ https://gbud.in/gf6cpp3	11
15	Solve more hard puzzles @ https://gbud.in/chshdpz	11
16	Solve other puzzles @ https://gbud.in/chsgppz	11
17	Play chess online for free. Solve puzzles and play with friends	12
18	Solve this puzzle online by scanning this QR code or go to the link below	13

Hard Chess puzzle # 0098 - Mate in 3 moves

Solve this hard chess puzzle and improve your chess games through improvement of your chess strategies and chess tactics. This hard puzzle is a subset of [kids games](#).

Puzzle No : 0098

Difficulty level : hard

Description : Mate in 3 moves

Next Move : White

Player level : Advanced

Short URL for puzzle : <https://gbud.in/gf6cpp3>

Hard chess puzzle 0098

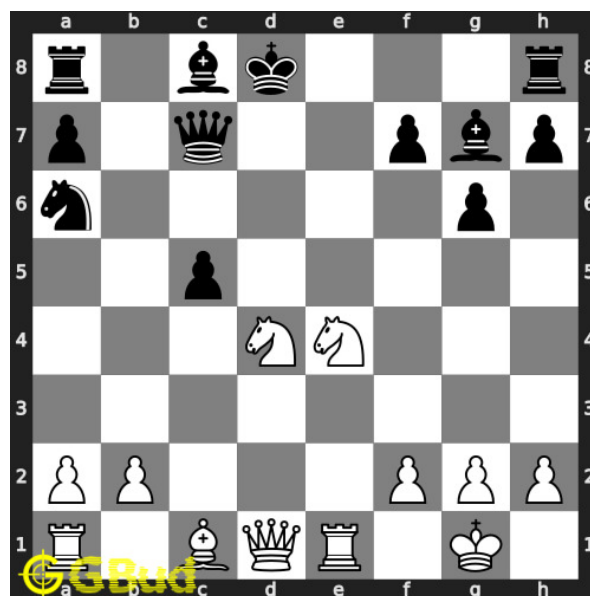


Figure 1: Solve this hard chess puzzle 0098. Mate in 3 moves @ <https://gbud.in/gf6cpp3>



Figure 2: Solve this hard chess puzzle online with solution @ <https://gbud.in/gf6cpp3>

Dont forget to check out [chess puzzles](#), [easy chess puzzles](#), [medium chess puzzles](#), [hard chess puzzles](#) and [chess puzzles collections](#) .

Solution to hard chess puzzle 0098

At this puzzle, next [move](#) is by [White](#). The objective of the puzzle is to mate in 3 moves.

See the interactive solution at the [puzzle page](#)

Solution 1

Initial board position This is the initial board position of hard chess puzzle 0098.

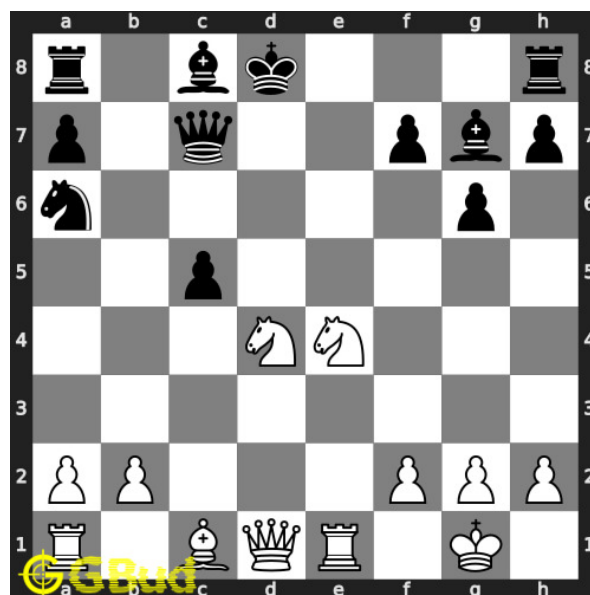


Figure 3: Initial board position of hard chess puzzle 0098

Move 1 Move by white

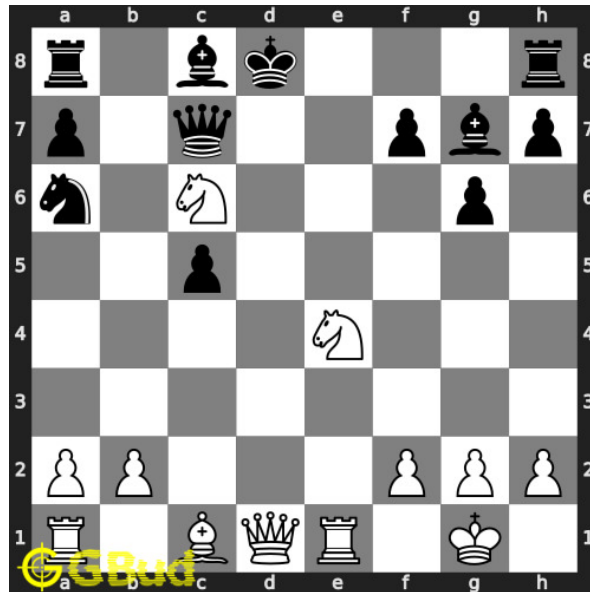


Figure 4: Nc6+

this is a double discovered **check** since the movement of **knight** results in **check** from itself and the **queen**. opponent's **king** is forced to **move**

Move 2 Move by black

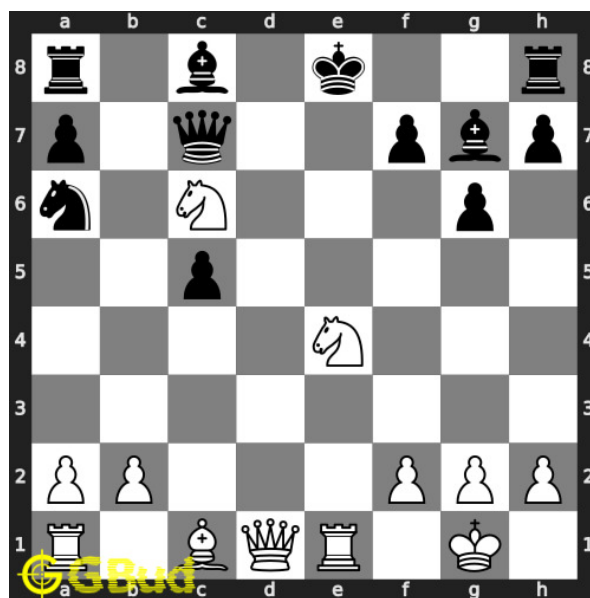


Figure 5: Ke8

opponent's **king moves** to e8 as this is the only legal **move** available.

Move 3 Move by white

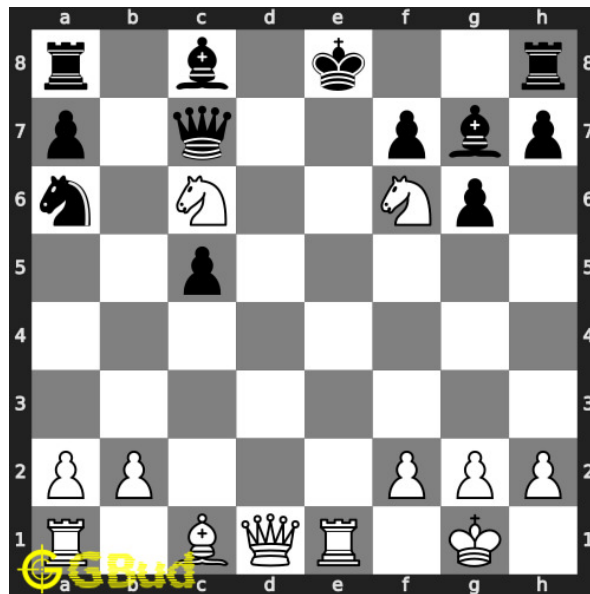


Figure 6: Nf6+

this is a next double discovered check since the movement of the knight results in check from itself and the rook.

Move 4 Move by black

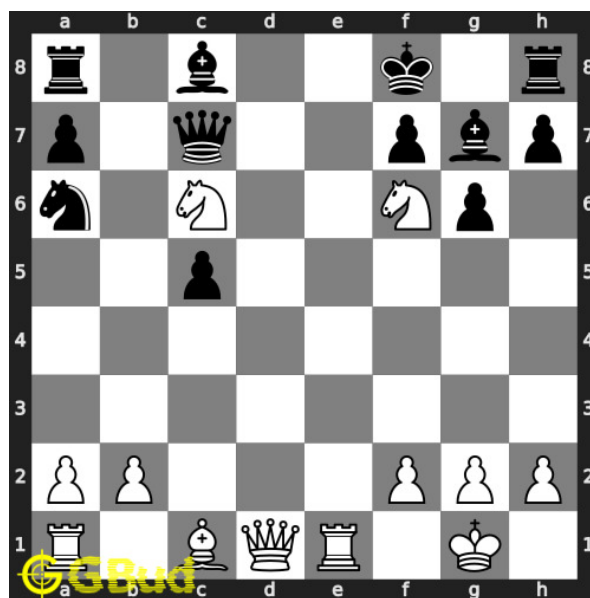


Figure 7: Kf8

opponent's king moves to f8 as this is the only legal move available.

Move 5 Move by white

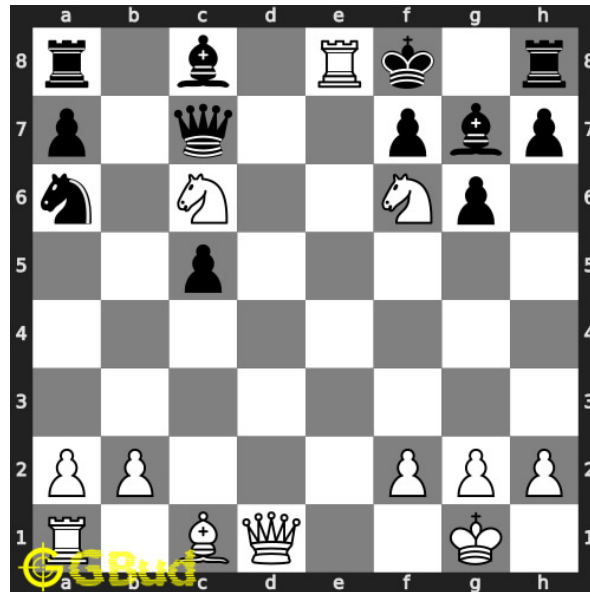


Figure 8: Re8#

your **rook** moves to e8 and **checkmate**. opponent's **king** can't **capture** your **rook** since it is supported by **knight**. it is also blocked by friendly **pieces**.. this is how you can **mate** in 3 **moves**.

Right moves for the solution to the hard chess puzzle 0098

Based on the objective of the puzzle, you have to make the right moves. Following are the right moves

1. Nc6+, Nf6+, Re8#

Explanation for the moves

1. Nc6+ - This is a double discovered check since the movement of knight results in check from itself and the queen. Opponent's king is forced to move
2. Ke8 - Opponent's king moves to e8 as this is the only legal move available.
3. Nf6+ - This is a next double discovered check since the movement of the knight results in check from itself and the rook.
4. Kf8 - Opponent's king moves to f8 as this is the only legal move available.
5. Re8# - Your rook moves to e8 and checkmate. Opponent's king can't capture your rook since it is supported by knight. It is also blocked by friendly pieces.. This is how you can mate in 3 moves.

6. For right move - You have just had a Anderssen's mate with a strong double discovered attacks. They were perfect moves.
7. For wrong move - You could have won by having successive double discovered checks. Try again

Categories of hard chess puzzle 0098

This hard chess puzzle falls in these categories.

1. [Hard chess puzzles](#)
2. [Mate in 3 puzzles in chess](#)
3. [Endgame puzzles in chess](#)
4. [Strategy puzzles in chess](#)
5. [Rook puzzles in chess](#)
6. [Queen puzzles in chess](#)
7. [Knight puzzles in chess](#)

hard chess puzzle 0098 chart



Figure 9: hard chess puzzle 98 chart 1



Figure 10: hard chess puzzle 98 chart 2



Figure 11: hard chess puzzle 98 chart 3

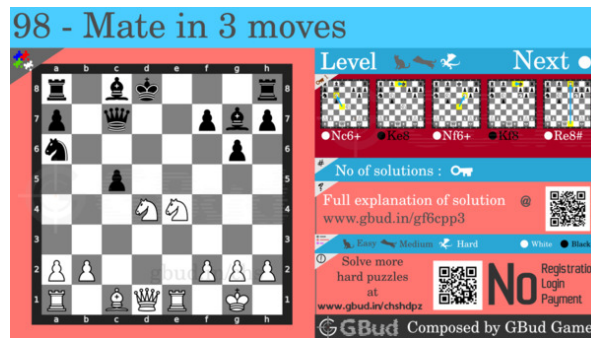


Figure 12: hard chess puzzle 98 chart 4

How to view the solution to hard chess puzzle 0098

To view the [solution to this puzzle](#), follow the steps given below

1. Go to the [puzzle page](#)
2. Click the solution button (Key as shown [below](#)) to view the solution



Figure 13: Click the solution button to view solutions @ <https://gbud.in/gf6cpp3>

How to get help for moves in the hard chess puzzle 0098

To get help or the possible next moves in the puzzle, , follow the steps given below

1. Go to the [puzzle page](#)
2. Click the help button (exclamation mark as shown [below](#)) to get help or suggestion on next possible [move](#)



Figure 14: Click the help button to get help on next move @ <https://gbud.in/gf6cpp3>



Figure 15: Solve more hard puzzles @ <https://gbud.in/chshdpz>



Figure 16: Solve other puzzles @ <https://gbud.in/chsgppz>

Play chess for free

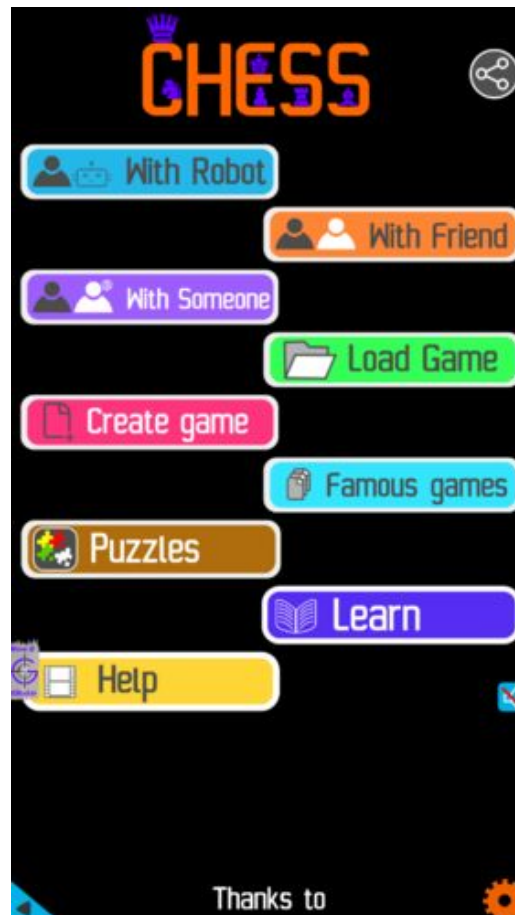


Figure 17: Play chess online for free. Solve puzzles and play with friends

Play chess for free at <https://gbud.in/chs>

We present you a platform to play chess online with friends for free. No need to install any app. You can play chess for free without registration or login.

Simple. You can do several chess related activities.

1. [solve chess puzzles](#)
2. [learn about chess](#)
3. [play chess with computer](#)
4. [play chess with friend](#)
5. [create your own chess games](#)

6. [fen viewer](#)
7. [fen editor](#)
8. [fen generator](#)
9. [pgn viewer](#)
10. [chess board editor](#)
11. [view famous chess games.](#)



Figure 18: Solve this puzzle online by scanning this QR code or go to the link below

<https://gbud.in/gf6cpp3>

Read the latest article on Hard Chess puzzle # 0098 - Mate in 3 moves by scanning this QR code or click the link

Previous article : « [Hard Chess puzzle # 0097 - Mate in 4 moves](#)

Next article : [Hard chess puzzles](#) »

[Back to top](#)

[Contact Us](#)